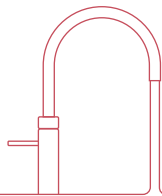


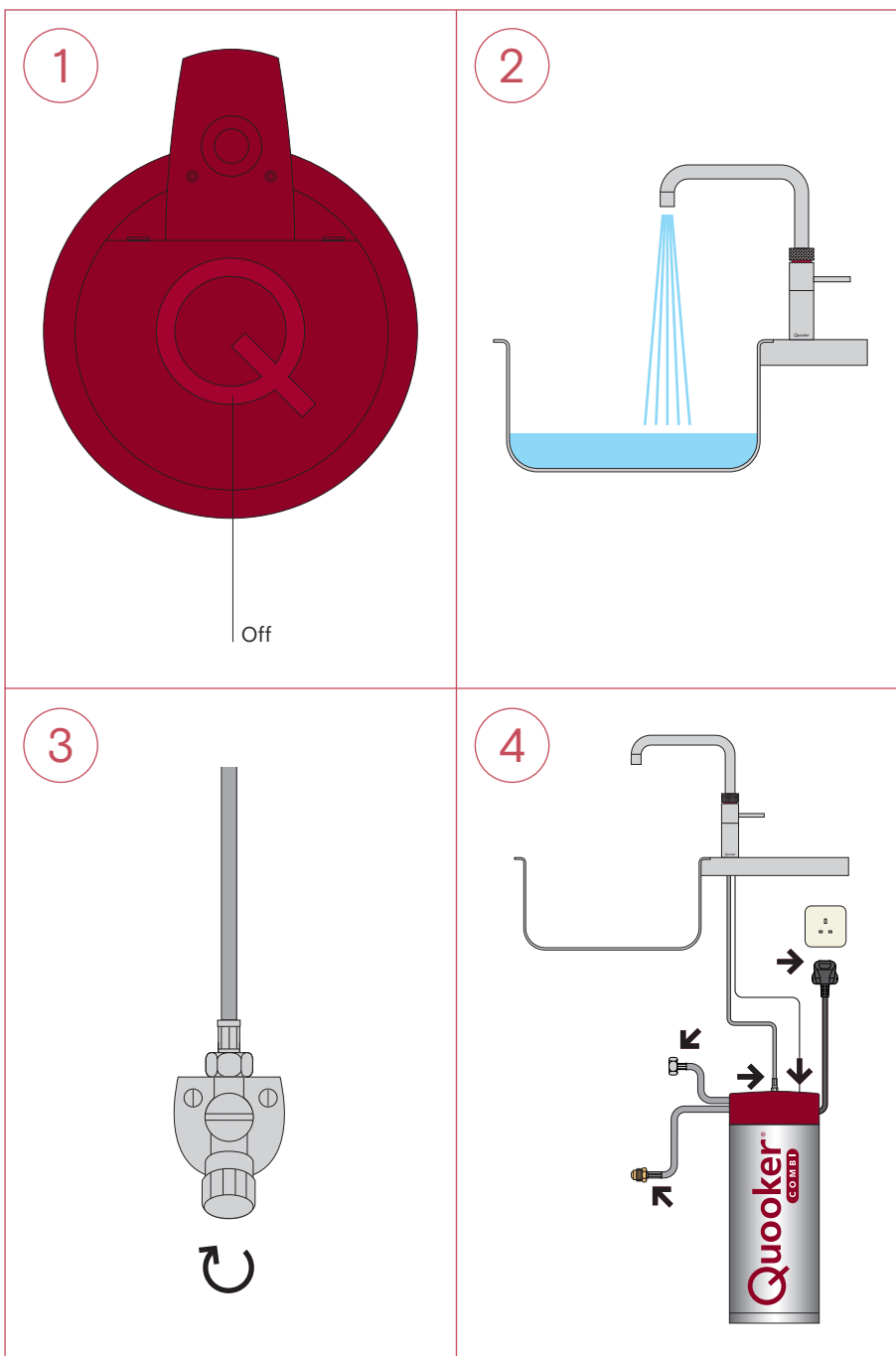
# SWOP

## Replacing the COMBI B tank



## Replacing the COMBI tank

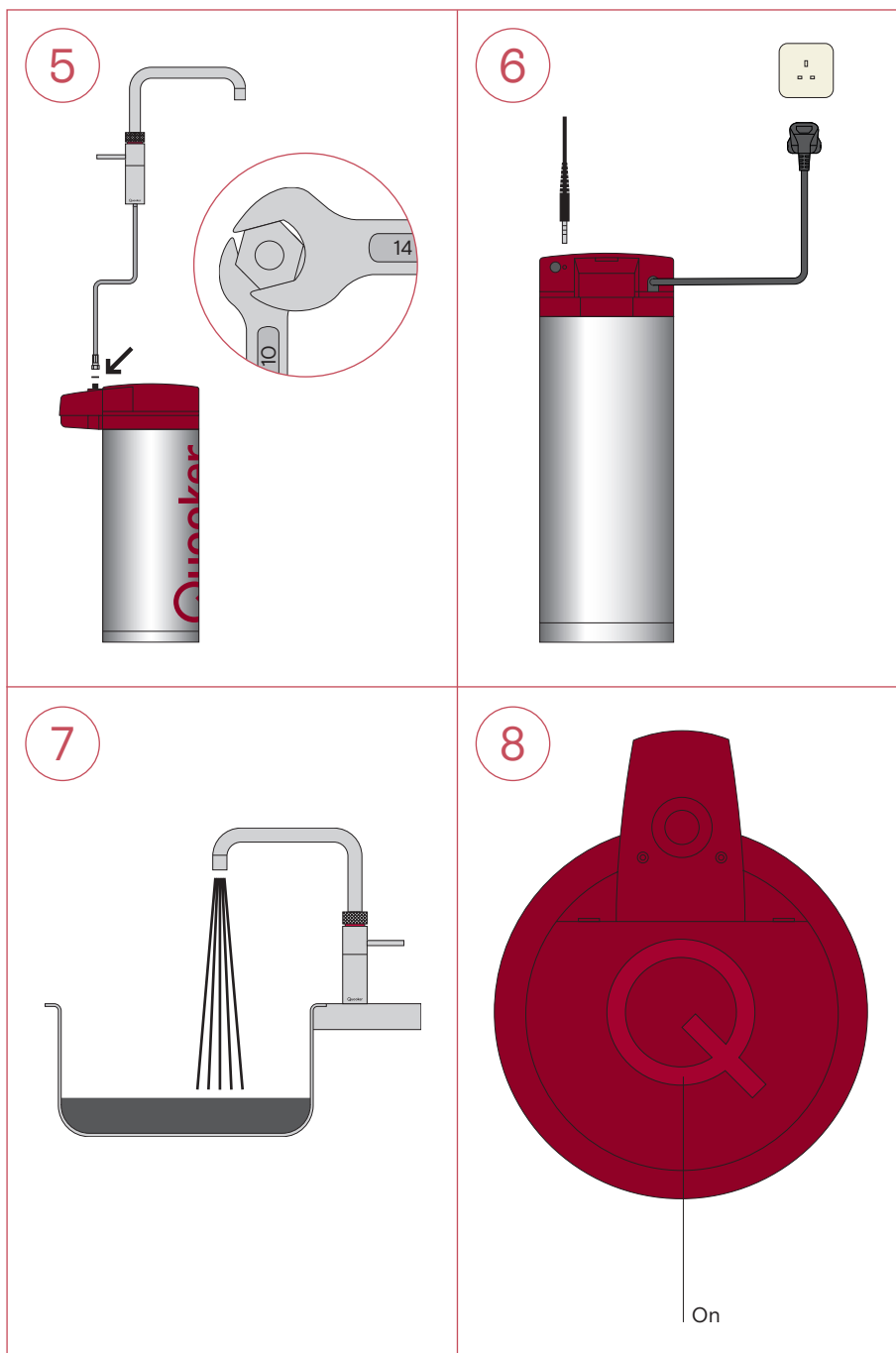
1. Switch off the tank with the Q-shaped button on the top. Do not unplug it or switch off the power yet.
2. Run the boiling water and leave it running until the water runs cold. Also run the cold water tap.
3. Close the main shut-off valve or stopcock. Run the boiling-water tap. If it is depressurised, no water will flow out of it.
4. Unplug the tank and disconnect the LED cable from the back of the tank cover. Disconnect the flexible hose between the tap and the tank using spanners 10 and 14. Disconnect the other two hoses from the reservoir with spanners 17 and 24. Remove the tank from the kitchen cabinet.



### Prepare for transport

Drain the tank by holding the inlet hose above the sink and the other hose up. The tank will empty by itself.

5. Place the new tank. Connect the tap hose to the tank with the small washer using spanners 10 and 14.
- Connect the two hoses of the tank without any seals or washers using spanners 17 and 24.
6. Connect the LED cable. Plug the tank in and switch on the power, but do not turn the tank on yet.
7. Run the boiling-water, then open the main shut-off valve or stopcock. Check for leaks. Flush the tank through for a couple of minutes until the water runs clear.
8. Switch on the tank. After the Quooker has heated up again, it is ready for use.



#### Returns

You are expected to return the old tank to Quooker within 30 days of receipt of the Exchange tank. Put the old tank in the new tank's box ready for postage. This contains the return label to return the package to us free of charge. Stick this return label clearly visible on the packaging and over the old shipping label so that it is no longer visible. Drop off the parcel at a parcel point near you. Always ask for a proof of postage and keep it safe.

Quooker®

[quooker.dk](http://quooker.dk)